



## Epi proColon<sup>®</sup>

Epi proColon Plasma Quick Kit	(M5-02-001)
Epi proColon Sensitive PCR Kit	(M5-02-002)
Epi proColon Control Kit	(M5-02-003)

### Rx Only

Caution: Federal Law restricts this device to sale by or on the order of a licensed practitioner.  
For *in vitro* diagnostic use only.  
Read and follow all instructions for use prior to using this test.



IFU 0008 rev 12, copyright © 22 August 2018, Epigenomics AG



M5-02-001, M5-02-002, M5-02-003



Epigenomics AG  
Geneststr. 5, 10829 Berlin  
Germany

## Contents

1. Intended Use, Contraindications, Warnings, Precautions and Limitations .....	2
2. Summary and Explanation .....	4
3. Principles of the Procedure .....	4
4. Precautions and Safety.....	5
5. Materials Provided .....	8
6. Storage and Stability .....	9
7. Materials Required But Not Provided .....	9
8. Specimen Collection and Handling.....	11
9. Test Procedure .....	12
10. Interpretation of Results .....	24
11. Quality Control .....	26
12. Limitations of the Procedure.....	27
13. Performance Characteristics .....	27
14. Meaning of Symbols.....	34
15. References.....	35
16. Contact Information .....	35

### 1. Intended Use, Contraindications, Warnings, Precautions and Limitations

#### Intended Use

The Epi proColon test is a qualitative in vitro diagnostic test for the detection of methylated Septin 9 DNA in EDTA plasma derived from patient whole blood specimens. Methylation of the target DNA sequence in the promoter region of the *SEPT9\_v2* transcript has been associated with the occurrence of colorectal cancer (CRC). The test uses a real-time polymerase chain reaction (PCR) with a fluorescent hydrolysis probe for the methylation specific detection of the Septin 9 DNA target.

The Epi proColon test is indicated to screen adults of either sex, 50 years or older, defined as average risk for CRC, who have been offered and have a history of not completing CRC screening. Tests that are available and recommended in the USPSTF 2008 CRC screening guidelines should be offered and declined prior to offering the Epi proColon test. Patients with a positive Epi proColon test result should be referred for diagnostic colonoscopy. The Epi proColon test results should be used in combination with physician's assessment and individual risk factors in guiding patient management.

#### Contraindications

- The Epi proColon test is not intended to replace colorectal cancer screening tests that are recommended by appropriate guidelines (e.g., 2008 USPSTF guidelines) such as colonoscopy, sigmoidoscopy and high sensitivity fecal occult blood testing.
- The Epi proColon test is not intended for patients who are willing and able to undergo routine colorectal cancer screening tests that are recommended by appropriate guidelines.

- The Epi proColon test is not intended for patients defined as having elevated risk for developing CRC based on previous history of colorectal polyps, CRC or related cancers, inflammatory bowel disease (IBD), chronic ulcerative colitis (CUC), Crohn's disease, familial adenomatous polyposis (FAP). Persons at higher risk also include those with a family history of CRC, particularly with two or more first degree relatives with CRC, or one or more first degree relative(s) less than 50 years of age with CRC.
- The Epi proColon test has not been evaluated in patients who have been diagnosed with a relevant familial (hereditary) cancer syndrome, such as non-polyposis colorectal cancer (HNPCC or Lynch Syndrome), Peutz-Jeghers Syndrome, MYH-Associated Polyposis (MAP), Gardner's syndrome, Turcot's (or Crail's) syndrome, Cowden's syndrome, Juvenile Polyposis, Cronkhite-Canada syndrome, Neurofibromatosis, or Familial Hyperplastic Polyposis, or in patients with anorectal bleeding, hematochezia, or with known iron deficiency anemia.

### **Warnings, Limitations and Precautions**

- The Epi proColon test demonstrated inferiority to a fecal test (OC-Auto<sup>®</sup> Polymedco, Inc.) for specificity, indicating that the Epi proColon test exhibited a higher rate of false positive results compared to the FIT test. The Epi proColon demonstrated non-inferiority to a fecal test for sensitivity.
- A positive Epi proColon test result is not confirmatory evidence for CRC. Patients with a positive Epi proColon test result should be referred for diagnostic colonoscopy.
- A negative Epi proColon test result does not guarantee absence of cancer. Patients with a negative Epi proColon test result should be advised to continue participating in a recommended CRC screening program according to screening guidelines.
- Screening with Epi proColon in subsequent years following a negative test result should be offered only to patients who after counseling by their healthcare provider, again decline CRC screening methods according to appropriate guidelines. The screening interval for this follow-up has not been established.
- The performance of Epi proColon has been established in cross-sectional (i.e., single point in time) studies. Programmatic performance of Epi proColon (i.e., benefits and risks with repeated testing over an established period of time) has not been studied. Performance has not been evaluated for patients who have been previously tested with Epi proColon. Non-inferiority of Epi proColon programmatic sensitivity as compared to other recommended screening methods for CRC has not been established.
- The rate of false positive Epi proColon results increases with age. Test results should be interpreted with caution in elderly patients. See Performance Characteristics in Section 13.
- CRC screening guideline recommendations vary for persons over the age of 75. The decision to screen persons over the age of 75 should be made on an individualized basis in consultation with a healthcare provider.

- Positive test results have been observed in healthy subjects and in patients diagnosed with chronic gastritis, lung cancer, and in pregnant women. <sup>6,7</sup>
- Test results should be interpreted by a healthcare professional. Patients should be advised of the cautions listed in the Epi proColon Patient Guide.

## 2. Summary and Explanation

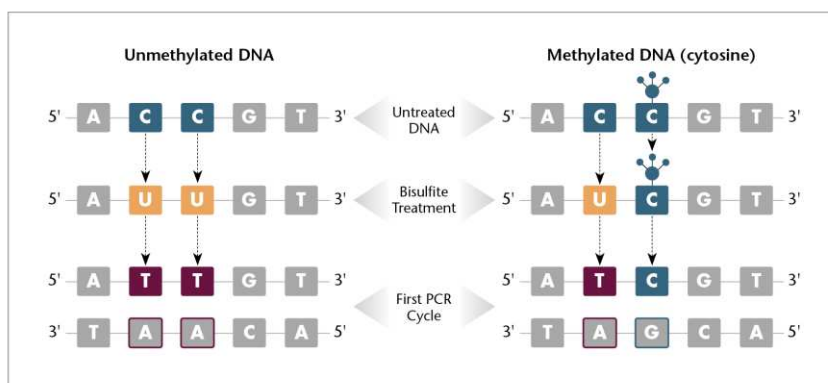
The Epi proColon test is an *in vitro* polymerase chain reaction (PCR) assay for the qualitative detection of methylated Septin 9 DNA isolated from 3.5 mL of patient plasma. There is an increased methylation of cytosine residues in the v2 region of the Septin 9 gene in colorectal cancer (CRC) tissue. This aberrant methylation can be detected by specific amplification of Septin 9 DNA present in the plasma sample. Detection of CRC DNA in plasma using the methylated Septin 9 DNA biomarker has been demonstrated in multiple case control studies of CRC patients and colonoscopy-verified negative controls<sup>1-4</sup>, as well as in two multicenter clinical evaluations. The Epi proColon blood test offers patients who have a history of non-adherence to other recommended methods and who decline guideline recommended tests, an alternative option to participate in a CRC screening program.

## 3. Principles of the Procedure

The Epi proColon test involves two primary procedural phases:

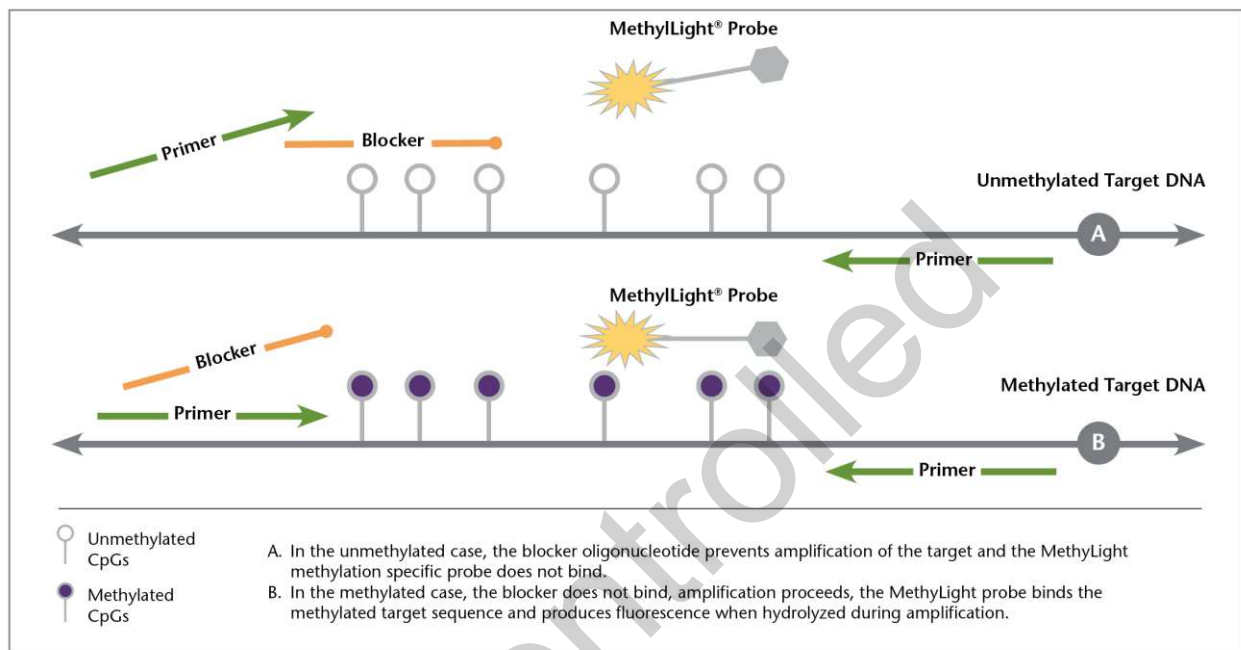
*First*, DNA is extracted from plasma and treated with bisulfite using the Epi proColon Plasma Quick Kit (M5-02-001). DNA is extracted from patient plasma by binding to magnetic beads. Impurities are removed from the magnetic beads by a wash step. The purified DNA is then released from the beads by suspension in an elution buffer, and treated with bisulfite reagents to produce bisulfite converted DNA (bisDNA). The bisDNA is then re-purified using magnetic beads. Bisulfite conversion is the method of choice for analyzing DNA methylation. It is based on the nucleophilic addition of a bisulfite ion to a cytosine nucleotide and a subsequent deamination reaction to yield uracil sulfonate; 5-methylcytosine (methylated cytosine) is protected from deamination by the methyl group. Thus, the sequence of bisDNA differs from the input DNA by the substitution of uracil nucleotides for unmethylated cytosines, while retaining methyl cytosine bases.

*Second*, bisDNA is assayed by a duplex Real-Time PCR (M5-02-002) with simultaneous detection of the target methylated Septin 9 DNA and the internal control ACTB ( $\beta$ -actin) DNA. The control is designed to establish that sufficient input DNA is included in the reaction. Epi proColon Positive and Epi proColon Negative Controls are provided with the Epi proColon Control Kit (M5-02-003) and are required for each test run. The Epi proColon test detects a



target methylated Septin 9 DNA and the internal control ACTB ( $\beta$ -actin) DNA. The control is designed to establish that sufficient input DNA is included in the reaction. Epi proColon Positive and Epi proColon Negative Controls are provided with the Epi proColon Control Kit (M5-02-003) and are required for each test run. The Epi proColon test detects a

bisDNA sequence containing methylated CpG sites within the v2 region of the *SEPT9* gene and a bisDNA sequence from the *ACTB* gene with no methylated CpG sites. The Epi proColon test discriminates methylated cytosines from cytosines using a combination of a blocker oligonucleotide and a methylation specific probe. The reaction comprises primers that are placed in regions lacking CpG dinucleotides, a blocker specific for bisulfite converted unmethylated sequences within the region is added to preferentially amplify methylated sequences, and a methylated Septin 9 specific fluorescent detection probe to exclusively identify methylated sequences amplified during the duplex PCR reaction<sup>5</sup>.



#### 4. Precautions and Safety

##### Laboratory Precautions Related to Real-Time PCR

- The Epi proColon test is for *in vitro* diagnostic use only
- This procedure is for professional laboratory use only and assumes familiarity with DNA extraction methods and real time PCR assays. Good technique is essential and failure to follow instructions provided in these instructions may produce erroneous results.
- Detection of colorectal cancer is dependent on the amount of free circulating tumor DNA in the specimen and may be affected by sample collection methods, sample storage, patient factors and tumor stage. Compliance with good laboratory practices is essential to minimize the risk of cross-contamination between samples during and after the DNA extraction, bisulfite conversion, and purification procedure
- Use only single-use pipettes and filter tips to prevent cross-contamination of the patient sample
- Use of reference pipettes for pipetting extracted and bisulfite treated DNA is strongly recommended
- Good technique is important to prevent the introduction of nucleases into samples during the extraction procedure
- Do not freeze extracted DNA

- Epi proColon Bisulfite Solution is sensitive to oxygen contact; use only unopened tubes of Epi proColon Bisulfite Solution; do not store but discard any left-over solution
- When removing liquid from microtubes in multiple steps in the procedure, take care not to remove magnetic beads
- In step 9.12, the “dry” spin step is very important. If the remaining droplets are not removed from the beads before drying and elution of the DNA, the remaining Wash B Buffer can be the cause of an INVALID PCR result.
- Strict separation of pre-PCR activities (e.g., plasma DNA extraction and purification, PCR setup) and post-PCR activities (e.g., Real-Time PCR) is highly recommended to prevent contamination by amplicons generated from previous PCR testing.
- To prevent the release of any PCR product, used PCR plates should never be opened. Place the PCR plate in a resealable plastic bag immediately after removal from the PCR instrument, close and dispose the bag in a dedicated PCR waste container.

### **Additional Precautions**

- Do not mix kit components between kit lots
- Do not use kits or kit components beyond their stated expiration date
- BD Vacutainer® K2EDTA blood collection tubes should be allowed to complete the evacuated fill to ensure the required 3.5 mL of plasma is obtained post-centrifugation
- Do not freeze BD Vacutainer K2EDTA blood collection tubes or whole blood collected in these tubes
- The Epi proColon test kits do not contain infectious substances or agents that may cause disease in humans or animals
- All patient blood and plasma specimens should be handled as though they are capable of transmitting disease. Observe universal precautions and safe laboratory procedures as specified in the OSHA Standard on Bloodborne Pathogens, CLSI Document M29-A3, and any other appropriate biosafety practices as required by your laboratory.

### **Safety Information**

When working with chemicals, always wear a laboratory coat and disposable gloves. Clean contaminated surfaces with water. For more information, please refer to the respective Safety Data Sheets (SDS) available at the E•Library found at [epiprocolon.com](http://epiprocolon.com).

---

#### **Epi proColon Lysis Binding Buffer and Epi proColon Wash A Concentrate:**

Contain TRITON X-100 and Guanidinium thiocyanate.

**Hazard statements:** Harmful if swallowed. Harmful in contact with skin. Harmful if inhaled. Causes skin irritation. Causes serious eye damage.

#### **Precautionary statements:**

Prevention: Avoid breathing mist/vapors/spray. Wash thoroughly after handling. Do not eat, drink or smoke when using this product. Use only outdoors or in a well-ventilated area. Wear protective gloves/protective clothing/eye protection/face protection.

Response: If swallowed: Call a poison center/doctor if you feel unwell. Rinse mouth. If on skin: Wash with plenty of water. If skin irritation occurs: Get medical advice/attention. Take off contaminated clothing and wash it before reuse. If in eyes: Rinse cautiously with water for several minutes. Remove contact lenses, if present and easy to do. Continue rinsing. Immediately call a



**DANGER**

---

poison center/doctor. If inhaled: Remove person to fresh air and keep comfortable for breathing. Call a poison center/doctor if you feel unwell.

Storage: Store away from incompatible materials.

Disposal: Dispose of contents/container in accordance with local/ regional/ national/ international regulations.

**Epi proColon Bisulfite Solution:** Contains aqueous solution of ammonium bisulfite (Ammonium hydrogen sulfite).

**Hazard statements:** Causes serious eye irritation.

**Precautionary statements:**

Prevention: Wash thoroughly after handling. Wear eye protection/face protection.

Response: If in eyes: Rinse cautiously with water for several minutes. Remove contact lenses, if present and easy to do. Continue rinsing. If eye irritation persists: Get medical advice/attention.

Storage: None.

Disposal: None.



WARNING

---

**Epi proColon Protection Buffer:** Contains 6-hydroxy-2,5,7,8-tetramethylchromane-2-carboxylic acid, Tetrahydrofurfuryl alcohol.

**Hazard statements:** Combustible liquid. Causes skin irritation. Causes serious eye irritation. May damage fertility or the unborn child.

**Precautionary statements:**

Prevention: Obtain special instructions before use. Do not handle until all safety precautions have been read and understood. Keep away from heat/sparks/open flames/hot surfaces. - No smoking. Wash thoroughly after handling. Wear protective gloves/protective clothing/eye protection/face protection.

Response: If exposed or concerned: Get medical advice/attention. In case of fire: Use foam, carbon dioxide, dry powder or water fog for extinction. If on skin: Wash with plenty of water. If skin irritation occurs: Get medical advice/attention. Take off contaminated clothing and wash it before reuse. If in eyes: Rinse cautiously with water for several minutes. Remove contact lenses, if present and easy to do. Continue rinsing. If eye irritation persists: Get medical advice/attention.

Storage Store in a well-ventilated place. Keep cool. Store locked up.

Disposal Dispose of contents/container in accordance with local/ regional/ national/ international regulations.



DANGER

---

Epi proColon Wash B Concentrate, Epi proColon Elution Buffer, Epi proColon Magnetic Beads, Epi proColon PCR Mix, Epi proColon Polymerase, Epi proColon Positive Control, and Epi proColon Negative Control are not harmful.

## 5. Materials Provided

The Epi proColon test is comprised of the Epi proColon Plasma Quick Kit (M5-02-001), the Epi proColon Sensitive PCR Kit (M5-02-002) and the Epi proColon Control Kit (M5-02-003).

### Contents

Table 1: Contents of the Epi proColon Plasma Quick Kit (M5-02-001)

Reagent	Containers	Volume	Storage Temperature
Epi proColon Lysis Binding Buffer	1 bottle	125 mL	15°C to 30°C
Epi proColon Wash A Concentrate	1 bottle	60 mL	15°C to 30°C
Epi proColon Magnetic Beads	1 bottle	4 mL	15°C to 30°C
Epi proColon Wash B Concentrate	1 bottle	7 mL	15°C to 30°C
Epi proColon Elution Buffer	1 tube	6 mL	15°C to 30°C
Epi proColon Bisulfite Solution	4 tubes	1.9 mL each	15°C to 30°C
Epi proColon Protection Buffer	1 tube	1 mL	15°C to 30°C

**Note:** The color of the Epi proColon Protection Buffer can vary from a clear to a brownish color.

Table 2: Contents of the Epi proColon Sensitive PCR Kit (M5-02-002)

Reagent	Containers	Volume	Storage Temperature
Epi proColon PCR Mix	2 tubes	810 µl each	-25°C to -15°C
Epi proColon Polymerase	1 tube	85 µl	-25°C to -15°C

Table 3: Contents of the Epi proColon Control Kit (M5-02-003)

Reagent	Containers	Volume	Storage Temperature
Epi proColon Negative Control	6 tubes	3.65 mL each	-25°C to -15°C
Epi proColon Positive Control	6 tubes	3.65 mL each	-25°C to -15°C



## 6. Storage and Stability

Reagents provided with the Epi proColon Plasma Quick Kit (M5-02-001), Epi proColon Sensitive PCR Kit (M5-02-002) and Epi proColon Control Kit (M5-02-003) are stable until the expiration date when stored and handled as directed. Do not use material past expiration date. Do not mix components from different kit lots.

### Epi proColon Plasma Quick Kit (M5-02-001)



Store all reagents of the Epi proColon Plasma Quick Kit at 15 to 30 °C.

Epi proColon Bisulfite Solution is sensitive to oxygen contact. Use only unopened tubes of Epi proColon Bisulfite Solution. Discard used tubes!

Store reconstituted Epi proColon Wash A Buffer and reconstituted Epi proColon Wash B Buffer at 15 to 30 °C for up to 6 weeks.

After first use store all reagents at 15 to 30 °C for up to 6 weeks.

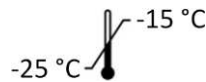
### Epi proColon Sensitive PCR Kit (M5-02-002)



Store Epi proColon PCR Mix and Epi proColon Polymerase at -25 to -15 °C.

Each Epi proColon PCR Mix tube may be thawed and refrozen one time. After first use store all reagents at -25 to -15 °C for up to 6 weeks.

### Epi proColon Control Kit (M5-02-003)



Store Epi proColon Control Kit at -25 to -15 °C.

## 7. Materials Required but Not Provided

The following general laboratory equipment is required to perform the Epi proColon test. All laboratory equipment should be installed, calibrated, operated, and maintained according to the manufacturer's recommendations.

The following tables for required and special equipment and consumables are provided along with suggested vendors and catalog and part numbers.

## General Laboratory Equipment

Required Equipment	Suggested Provider
Tube racks for 15 mL tubes and 2 mL tubes	Fisher Scientific, Cat. No. 03-448-11, or equivalent
Rotator with adjustable angle	GLAS-COL 099A RD4512, VWR International, Cat. No. 62404-006, or equivalent
Vortex Mixer	Thermo Scientific MaxiMix II vortex mixer, Cat. No. M37615Q, or equivalent
Thermoshaker for 2 mL tubes	Thermomixer® C with dry heating block 2 mL Eppendorf, Cat. No. 5382000023 and 5362000035 or equivalent
Magnetic Separator	DynaMag™-15 magnet, Life Technologies, Cat. No. 12301D
Magnetic Separator	DynaMag-2 magnet, Life Technologies, Cat. No. 12321D
Reference Pipettes with adjustable volumes of the following ranges 10-100 µL, 100-1000 µL	Eppendorf Research® Plus, adjustable-volume pipette, Eppendorf, Cat. No. 3120000046, 3120000062, or equivalent
Repeat Pipettor capable of repetitively dispensing volumes in an adjustable range	Eppendorf Repeater® M4, Eppendorf, Cat. No. 4982000322, or HandyStep® electronic, Brandtech®, Cat. No. 705012, or equivalent
Bench Top Centrifuge with rotor for 1.5/2.0 mL tubes	Centrifuge 5430 with Rotor FA-45-30-11, Eppendorf, Cat. No. 022620509 or equivalent
Multichannel Pipette	Eppendorf 8-Channel, 10-100 µL Cat. No. 3122000035, or equivalent
Centrifuge for PCR plates	Centrifuge 5430 (Bench Top above) Eppendorf Cat. No. 022620509 with rotor 022654403, or Centrifuge 4-16S, Qiagen Inc., Cat. No. 81510 and 81031, or equivalent
100 mL graduated cylinder (PP)	Brandtech®, Cat. No. V649941, or equivalent

## General Laboratory Consumables and Reagents

Consumables and Reagents	Suggested Consumables and Reagents
Ethanol absolute, 200 proof, for molecular biology, ≥99.5 %	Sigma-Aldrich Co., Cat. No. E7023, or equivalent
15 mL polypropylene (PP) centrifuge tubes with conical bottom, sterile	Sarstedt, Cat. No. 62.554.502, or equivalent
2.0 mL microtubes with round bottom and with attached PP cap with lid seal mechanism	Sarstedt SafeSeal, Cat. No. 72.695.400, or equivalent
Pipette tips with aerosol barrier	Eppendorf ep Dualfilter T.I.P.S.®: - 2-100 µL Cat. No. 022491237, or equivalent - 50-1000 µL Cat. No. 022491253, or equivalent
Repeat Pipettor Tips for volumes of 0.5 mL, 1 mL, 10 mL, 25 mL	Eppendorf Combitips Advanced®: - 0.5 mL Cat. No. 0030089421, or equivalent - 1 mL Cat. No. 0030089430, or equivalent - 10 mL Cat. No. 0030089464, or equivalent - 25 mL Cat. No. 0030089472, or equivalent
Disposable Transfer Pipettes, non-sterile bulk packaged, length about 15 cm (6 inches), stem diameter 5 mm, capacity about 5 mL	Samco™, graduated 1 mL large bulb non-sterile pipettes, Thermo Scientific Cat. No. 222, or equivalent
Disposable Transfer Pipettes, non-sterile bulk packaged, length about 23 cm (9 inches), stem diameter 5 mm, capacity about 5 mL	Samco extra-long transfer pipettes, Thermo Scientific, Cat. No. 262, or equivalent
96 well plates for DNA storage	PCR plate 96, skirted, Eppendorf, Cat. No. 951020401, or equivalent
Adhesive Film or Foil for DNA storage plate	VWR® PCR sealing film Cat. No. 82018-844, or equivalent

Consumables and Reagents	Suggested Consumables and Reagents
Applicator to form a tight seal between a microplate and an adhesive film	MicroAmp® adhesive film applicator, Life Technologies, Cat. No. 4333183, or equivalent
Cryo vials, 4 mL	VWR Cat. No. 89094-812, or equivalent
Resealable bags, 10 x 15 cm, for disposing of used PCR plates	VWR Cat. No. 89005-280, or equivalent

### **Required Special Equipment and Consumables**

The following special equipment and consumables are needed to perform the Epi proColon test and cannot be replaced by other equipment.

Special Equipment/Consumables	Catalog and Part Numbers
Applied Biosystems® 7500 Fast Dx Real-Time PCR Instrument with Sequence Detection Software v1.4 21 CFR Part 11 Module and Windows XP operating system with Service Pack 2 or 3 or with Sequence Detection Software v1.4.1 21 CFR Part 11 Module and Windows 7 operating system	Life Technologies (Thermo Fisher Scientific, Inc.) part no. 4406984 or 4406985
MicroAmp® Fast Optical 96-Well Reaction Plate with Barcode, 0.1 mL	Applied Biosystems (Life Technologies Co.), 20 plates, Cat. No. 4346906, 200 plates, Cat. No. 4366932
MicroAmp® 96- & 384-Well Optical Adhesive Film	Applied Biosystems (Life Technologies, Thermo Fisher Scientific, Inc.) 25 sheets, Cat. No. 4360954 or 100 sheets, Cat. No. 4311971
Vacutainer® K2EDTA 10 mL Blood Collection Tubes	Becton Dickinson, Cat. No. 366643

### **Installation Requirements**

The installation, calibration, performance verification and maintenance of the Applied Biosystems 7500 Fast Dx Real-Time PCR Instrument must be performed according to the manufacturer's instructions.

**Note:** Monthly background calibration as described in the manufacturer's maintenance procedure must be performed by the laboratory. Furthermore, the semi-annual maintenance tasks Operation Qualification and Performance Qualification (OQ/PQ) including calibration of the pure dyes FAM™, JOE™, TAMRA™ and the annual maintenance must be performed by an Applied Biosystems' Field Service Engineer.

## **8. Specimen Collection and Handling**

### **Blood Collection**

Blood should be collected according to your laboratory's procedure for venipuncture using **ONLY Vacutainer® K2EDTA 10 mL blood collection tubes (lavender top, Becton Dickinson)**. **Blood collection tubes should be allowed to complete the evacuated fill. Whole blood may be stored refrigerated or at room temperature (2°C to 30°C). Plasma preparation should be performed within 4 hours after blood is collected. Ensure a minimum of 3.5 mL of plasma is obtained following centrifugation.**

The plasma sample may be stored refrigerated at 2°C to 8°C for up to 72 hours, or frozen at -15°C to -25°C for up to 14 days. Transport and shipment of refrigerated or frozen plasma should follow the same temperature and time requirements as stated above.

**Note:** Do not freeze whole blood samples.

### **Plasma Specimen Preparation**

- Label all tubes with appropriate patient identification information
- Prior to use, disable the brake function in the centrifuge to prevent disruption of the cell layer
- Centrifuge the Vacutainer K2EDTA blood collection tube for 12 min at 1350 ± 150 rcf. [For conversion of RPM (revolutions per minute) to rcf (relative centrifugal force), refer to the centrifuge manufacture's user manual]
- Remove blood collection tube from the centrifuge (If the plasma sample is hemolyzed, discard and acquire a new blood specimen from the patient)
- Using a fresh 6 inch disposable transfer pipette, transfer plasma from the blood collection tube to a 15 mL polypropylene centrifuge tube with conical bottom
- Centrifuge plasma in the 15 mL centrifuge tube for 12 min at 1350 ± 150 rcf
- Using a fresh, extra-long 9 inch disposable transfer pipette or serological pipette, transfer a minimum of 3.5 mL of plasma into a labelled cryovial or centrifuge tube
- Start DNA extraction with the Epi proColon Plasma Quick Kit
- In a labeled cryovial, plasma samples may be stored refrigerated at 2°C to 8°C for up to 72 hours, or frozen at -15°C to -25°C for up to 14 days.

**Note:** Take care not to disturb or transfer the buffy coat (white blood cells) layered above the red blood cells in the blood collection tube after the first centrifugation or sedimented at the bottom of the conical centrifuge tube after the second centrifugation.

## **9. Test Procedure**

A repeat pipettor is recommended for repetitive dispensing of the following reagents:

- Epi proColon Lysis Binding Buffer step 9.3
- Ethanol in DNA binding step 9.4

Reference pipettes are recommended for the following:

- Epi proColon Magnetic Bead suspension
- Epi proColon Wash A Buffer
- Epi proColon Wash B Buffer
- Epi proColon Elution Buffer
- Epi proColon Bisulfite Solution
- Epi proColon Protection Buffer and the PCR Master Mix

Use of reference pipettes for pipetting extracted and bisulfite treated DNA is strongly recommended.

## 9.1. Preparation of Working Solutions

### Preparation of Epi proColon Wash A Buffer

- Add 60.0 mL of Absolute Ethanol (for molecular biology,  $\geq 99.5\%$ ) to the Epi proColon Wash A Concentrate using a sterile graduated cylinder or a serological pipette
- Close lid, mix thoroughly by inverting the bottle five times, avoiding formation of foam; Label the bottle with date of dilution, and mark the “Ethanol added” checkbox
- Store reconstituted Epi proColon Wash A Buffer at 15°C to 30°C for up to 6 weeks

### Preparation of Epi proColon Wash B Buffer

- Add 40.0 mL of Absolute Ethanol (for molecular biology,  $\geq 99.5\%$ ) to the Epi proColon Wash B Concentrate using a sterile graduated cylinder or a serological pipette
- Close lid, mix thoroughly by inverting the bottle five times. Label the bottle with date of dilution, and mark the “Ethanol added” checkbox
- Store reconstituted Epi proColon Wash B Buffer at 15°C to 30°C for up to 6 weeks

## 9.2. DNA Extraction and Bisulfite Conversion from Patient Plasma

The Epi proColon test kit contains sufficient reagents to process up to 32 samples including quality controls. One Epi proColon Positive Control and one Epi proColon Negative Control must be included in each independent test run. There are four single-use tubes of Epi proColon Bisulfite Solution that will enable a maximum of four independent test runs (e.g., 4 runs of 8 samples each).

**Note:** Brief centrifugation of microtubes (stated as ‘Briefly spin down the tubes’) is required in several steps of this instruction to remove drops from the lid and/or to collect remaining liquid. It is recommended to centrifuge for 10 to 20 sec at  $1,000 \pm 150$  rcf using a Bench-Top centrifuge. Avoid stronger centrifugation to prevent the compacting of magnetic bead pellets in these steps. For conversion of RPM (revolutions per minute) to rcf (relative centrifugal force), refer to the manufacturer’s centrifuge user manual.

**Note:** Vortexing of tubes and vials is required in several steps of this instruction to ensure homogeneous mixing of liquid. It is recommended to vortex samples for 5 to 10 sec at medium speed.

### Thawing of Plasma and Epi proColon Positive and Negative Control

- Thaw one Epi proColon Positive Control and one Epi proColon Negative Control for 30 min at 15°C to 30°C
- If frozen plasma samples are used, thaw samples for about 30 min at 15°C to 30°C
- Start lysis within 60 min after thawing

## 9.3. Lysis

**Note:** Prior to use, briefly shake the Epi proColon Lysis Binding Buffer and visually check for precipitates. If precipitates are present heat the Epi proColon Lysis Binding Buffer in a water bath at 37°C for 60 min and shake gently until the precipitate is completely dissolved. Equilibrate Epi proColon Lysis Binding Buffer to room temperature before use.

- Add the following to a labelled 15 mL conical centrifuge tube:
  - 3.5 mL plasma sample, Epi proColon Positive Control, or Epi proColon Negative Control

- 3.5 mL Epi proColon Lysis Binding Buffer
- Cap the tube and vortex for 5 to 10 sec
- Incubate tubes on the bench top at 15°C to 30°C for 10 ± 1 min

#### 9.4. DNA Binding

**Note:** A homogeneous suspension of the Epi proColon Magnetic Beads is essential for proper test performance. Deviations from the specified amount of beads may lead to false results. To ensure the correct magnetic bead concentration, the bottle should be mixed thoroughly just before pipetting. There should be no visible sediment at the bottom of the bottle. Mix to ensure a homogeneous suspension between the pipetting steps.

- Add to the 15 mL centrifuge tube in the following order:
  - 90 µL Epi proColon Magnetic Beads (freshly suspended)
  - 2.5 mL of Absolute Ethanol (for molecular biology, ≥99.5 %)
- Cap the tube and mix by inverting the tube 5 to 6 times
- Place 15 mL tubes into a rotator
- Rotate at room temperature for 45 ± 5 min at medium speed (approximately 10 to 20 rpm); adjust rotator angle to 35 to 45 degrees

#### 9.5. DNA Washing

**Note:** Before starting the wash procedure set the thermoshaker to 80 ± 2°C for later use in the elution and bisulfite conversion steps.

- Place the 15 mL tubes into the DynaMag-15 magnetic racks for 5 to 10 min
- Pour off the supernatant carefully, taking care not to remove magnetic beads
  - Add 1.5 mL Epi proColon Wash A Buffer
- Resuspend magnetic beads completely by vortexing for 5 to 10 sec
- Using an extra-long (9 inch) disposable transfer pipette, transfer magnetic beads suspension into a labelled 2.0 mL microtube
- Place disposable transfer pipette back into 15 mL tube to collect remaining magnetic beads and transfer them into the 2.0 mL microtube
- Place the microtubes into the DynaMag-2 magnetic racks for 2 to 6 min
- Using a 6 inch disposable transfer pipette, remove as much buffer as possible while microtubes are still in the DynaMag-2 magnetic rack, taking care not to remove magnetic beads
- Briefly spin down the microtubes
- Place the 2.0 mL microtubes into the DynaMag-2 magnetic racks for 2 to 6 min
- Using a 10-100 µL reference pipette, remove as much residual buffer as possible while microtubes are still in magnetic rack

#### 9.6. Elution

- Transfer the microtubes into a non-magnetic rack
- Vortex Epi proColon Elution Buffer for 5 to 10 sec
- Add 100 µL Epi proColon Elution Buffer to each microtube

- Close the microtubes
- Resuspend the magnetic beads by vortexing for 5 to 10 sec
- Place microtubes into a thermoshaker set to  $1,000 \pm 100$  rpm and incubate at  $80 \pm 2^\circ\text{C}$  for  $10 \pm 1$  min
- Briefly spin down the microtubes
- Place microtubes into the DynaMag-2 magnetic racks for 2 to 6 min.
- Transfer the complete eluate, while microtubes are still in the magnetic rack, ( $\sim 100$   $\mu\text{L}$  DNA solution) into fresh 2.0 mL microtubes
- Discard the 2 mL microtubes containing the magnetic beads

### 9.7. Storage of Extracted DNA

**Note:** If extracted DNA is not used immediately, store material at  $2^\circ\text{C}$  to  $8^\circ\text{C}$  for up to 24 hours. DO NOT FREEZE THE EXTRACTED DNA.

### 9.8. Bisulfite Conversion

**Note:** Epi proColon Bisulfite Solution is sensitive to oxygen contact. USE ONLY UNOPENED TUBES of Epi proColon Bisulfite Solution; do not store but discard any left-over solution.

**Note:** The color of the Epi proColon Protection Buffer can vary from a clear to a brownish color.

- Add the following reagents to the 2.0 mL microtubes containing the eluate ( $\sim 100$   $\mu\text{L}$  DNA solution):
  - 150  $\mu\text{L}$  Epi proColon Bisulfite Solution
  - 25  $\mu\text{L}$  Epi proColon Protection Buffer
- Cap the microtubes and mix the bisulfite reaction by vortexing for 5 to 10 sec
- Briefly spin down the microtubes
- Place microtubes into thermoshaker and incubate for  $45 \pm 5$  min at  $80 \pm 2^\circ\text{C}$  without shaking
- Remove microtubes from the thermoshaker immediately after  $45 \pm 5$  min
- Reset thermoshaker temperature to  $23 \pm 2^\circ\text{C}$ , or set up a second thermoshaker to  $23 \pm 2^\circ\text{C}$  for later use

### 9.9. Binding Step

**Note:** A homogeneous suspension of beads in the Epi proColon Magnetic Beads suspension is essential for proper performance. Deviations from the specified amount of beads may lead to false results. To ensure correct magnetic bead concentration, the bottle should be mixed thoroughly just before pipetting. There should be no visible sediment at the bottom of the bottle. Mix to ensure a homogeneous suspension between the pipetting steps.

- Briefly spin down the 2.0 mL microtubes containing the bisulfite reaction
- Add the following components to the microtube:
  - 1000  $\mu\text{L}$  Epi proColon Wash A Buffer
  - 20  $\mu\text{L}$  Epi proColon Magnetic Beads (freshly suspended)
- Mix by vortexing for 5 to 10 sec
- Wait until thermoshaker reaches  $23 \pm 2^\circ\text{C}$

- Place the microtubes in the thermoshaker at  $1000 \pm 100$  rpm and incubate for  $45 \pm 5$  min at  $23 \pm 2^\circ\text{C}$
- Briefly spin down the microtubes
- Place microtubes on the DynaMag-2 magnetic racks for 2 to 6 min.
- Using a fresh 6 inch disposable transfer pipette, remove as much liquid as possible while tubes are still in the magnetic rack, taking care not to remove magnetic beads

#### 9.10. First Wash

- Remove the sample rack from the magnet for washing and vortexing
  - Add 800  $\mu\text{L}$  Epi proColon Wash A Buffer
- Resuspend by vortexing for 5 to 10 sec
- Briefly spin down the microtubes
- Place microtubes on the DynaMag-2 magnetic racks for 2 to 6 min.
- Using a fresh 6 inch disposable transfer pipette, remove as much liquid as possible while tubes are still in the magnetic rack, taking care not to remove magnetic beads

#### 9.11. Second Wash

- Remove the sample rack from the magnet for washing and vortexing
  - Add 800  $\mu\text{L}$  Epi proColon Wash B Buffer
- Resuspend by vortexing for 5 to 10 sec
- Briefly spin down the microtubes
- Place microtubes on the DynaMag-2 magnetic racks for 2 to 6 min
- Using a fresh 6 inch disposable transfer pipette, remove as much liquid as possible while tubes are still in the magnetic rack, taking care not to remove magnetic beads

#### 9.12. Third Wash

- Remove the sample rack from the DynaMag-2 magnet for washing and vortexing
  - Add 400  $\mu\text{L}$  Epi proColon Wash B Buffer
- Resuspend by vortexing for 5 to 10 sec
- Briefly spin down the microtubes
- Place microtubes on the DynaMag-2 magnetic racks for 2 to 6 min
- Using a fresh 6 inch disposable transfer pipette, remove as much liquid as possible while tubes are still in the magnetic rack, taking care not to remove magnetic beads
- Briefly spin down the microtubes

**Note:** This “dry” spin step is very important. If the remaining droplets are not removed from the Beads, remaining Epi proColon Wash B Buffer can be the cause of an INVALID PCR result.

- Place microtubes on the DynaMag-2 magnetic racks for 2 to 6 min
- Using a 10-100  $\mu\text{L}$  reference pipette, remove as much remaining liquid as possible while tubes are still in the magnetic rack, taking care not to remove magnetic beads



### 9.13. Drying

**Note:** Do not increase drying time or temperature as over-drying might reduce bisDNA recovery.

- Open microtube lid
- Place open microtubes into thermoshaker
- Allow the pellet to dry for  $10 \pm 1$  min at  $23 \pm 2^\circ\text{C}$  without shaking

### 9.14. Elution

- Transfer microtubes into a non-magnetic rack
  - Add 60  $\mu\text{L}$  Epi proColon Elution Buffer
- Close the microtubes
- Resuspend the magnetic beads by vortexing for 5 to 10 sec
- Incubate for  $10 \pm 1$  min at  $23 \pm 2^\circ\text{C}$  in a thermoshaker at  $1000 \pm 100$  rpm
- Briefly spin down the microtubes
- Place microtubes on the DynaMag-2 magnetic racks for 2 to 6 min
- Using a 10-100  $\mu\text{L}$  reference pipette, transfer the complete eluate ( $\sim 60 \mu\text{L}$  DNA solution) into a 96-well plate and seal the plate with adhesive film using an adhesive film applicator
- Set up the bisDNA storage plate according the recommended plate layout in Table 4

Table 4: Recommended Layout for a bisDNA Storage Plate

	1	2	3	4	5	6	7	8	9	10	11	12
A	PC*	S7										
B	NC*	S8										
C	S1	S9										
D	S2	S10										
E	S3	S11										
F	S4	S12										
G	S5	S13										
H	S6	S14										

\* PC: Epi proColon Positive Control, NC: Epi proColon Negative Control

### 9.15. Storage of bisDNA

If purified bisDNA is not used immediately, store material at  $2^\circ\text{C}$  to  $8^\circ\text{C}$  for up to 24 hours or frozen at  $-25^\circ\text{C}$  to  $-15^\circ\text{C}$  for up to 3 days.

### 9.16. PCR Setup

**Note:** Each bisDNA sample (patient sample, Epi proColon Positive Control, or Epi proColon Negative Control) must be tested in triplicate.

**Note:** Prior to use, spin Epi proColon Polymerase for 10 - 20 sec at 1,000 ± 150 rcf using a bench-top centrifuge to remove drops from the lid.

### **Preparation of PCR Master Mix**

- Thaw 1 or 2 Epi proColon PCR Mix tubes depending on the desired number of patient and control sample determinations, Table 5
- Vortex the Epi proColon PCR Mix tube(s) for 5 to 10 sec, briefly spin down the tube(s)
- Transfer the corresponding volumes of Epi proColon PCR Mix and Epi proColon Polymerase as indicated in Table 5 into a 2.0 mL microtube
- Mix the PCR Master Mix by vortexing for 5 to 10 sec
- Briefly spin the PCR Master Mix to remove drops from the lid

**Note:** Use PCR Master Mix, immediately. Do not store. Refreeze unused Epi proColon PCR Mix and Epi proColon Polymerase, directly after use.

Table 5: Preparation of PCR Master Mix

<b>Component</b>	<b>Volume for 8 Determinations (24 PCRs)</b>	<b>Volume for 16 Determinations (48 PCRs)</b>	<b>Volume for 24 Determinations (72 PCRs)</b>	<b>Volume for 32 Determinations (96 PCRs)</b>
<b>Epi proColon PCR Mix</b>	383.8 µL	767.7 µL	1151.5 µL	1535.4 µL
<b>Epi proColon Polymerase</b>	19.4 µL	38.7 µL	58.1 µL	77.4 µL

**Note:** For a single PCR, 14.3 µL Epi proColon PCR Mix and 0.7 µL Epi proColon Polymerase are required. Epi proColon requires three PCRs (triplicates) for one determination:

### **PCR Plate Preparation**

- Set up the PCR plate. The layout as shown in Table 6 is recommended
- Transfer 15 µl PCR Master Mix into the selected wells of the MicroAmp® Fast Optical 96-Well Reaction Plate
- Briefly centrifuge the bisDNA storage plate created in section 9.14 for 1 min at 1000 ± 100 rcf using the plate centrifuge
- Add 15 µl of each bisDNA solution to 3 independent wells of the PCR plate as shown in Table 6

Table 6: Recommended PCR Plate Layout

	1	2	3	4	5	6	7	8	9	10	11	12
A	PC*	PC*	PC*	S7	S7	S7						
B	NC*	NC*	NC*	S8	S8	S8						
C	S1	S1	S1	S9	S9	S9						
D	S2	S2	S2	S10	S10	S10						
E	S3	S3	S3	S11	S11	S11						
F	S4	S4	S4	S12	S12	S12						
G	S5	S5	S5	S13	S13	S13						
H	S6	S6	S6	S14	S14	S14						

\*PC: Epi proColon Positive Control, NC:Epi proColon Negative Control

- Seal the plate with MicroAmp® Optical Adhesive Film
- Briefly spin down the plate with a plate centrifuge for 1 min at 1000 ± 100 rcf

**Note:** The filled PCR plate can be stored in a refrigerator at 2°C to 8°C for up to 4 h.

### **Plate Loading**

**Note:** The PCR Master Mix does not contain ROX or any other reference dye. Accordingly, the passive reference setting must be set to “none”.

- Start the software
- Create a new plate document
- Click “Create New Document”
- Define the following plate document:
  - Assay: Standard Curve (Absolute Quantification)
  - Container: 96-Well Clear
  - Template: Blank Document
  - Run Mode: Standard 7500
- Click “Next”
- Click “New Detector”
- Create a new detector using following properties:
  - Name: “Septin9”
  - Description: “Epi proColon”
  - Reporter dye: “FAM”
  - Quencher dye: (none)
  - Color: “Red”
- Click “Create Another” and define following properties:
  - Name: “ACTB”
  - Description: “Epi proColon”
  - Reporter dye: “JOE”

- Quencher dye: (none)
- Color: "Green"
- Click "ok"
- Select both detectors and click "Add >>" to assign the detectors to the plate document
- Select "none" in the drop down menu of "Passive Reference"
- Click "Done"
- Go to the tab "Setup" and "Plate"
- Select all 96 wells of the plate
- Go to the menu point "View" and open the "Well Inspector"
- Select detector "Septin9" and "ACTB"
- Check the Passive Reference setting to be "none" (see Figure 1)
- Click "Close"
- Go to tab "Instrument" to program the cycling conditions as described in Table 7
- Change the following settings:
  - Sample Volume: 30  $\mu$ l
  - Run Mode: Standard 7500
  - Data Collection: Stage 2, Step 2
- Create a "Thermal Profile" with 3 stages.
- Create a "Stage 2" having 3 steps, and a "Stage 1" and "Stage 3" having one step.
- Enter repetitions, target temperature, and hold time according to Table 7.

Change the "Ramp Rate" according to Table 7

- Set "Data Collection" for "Stage 2, Step 2 (55.5 @ 0:35)"
- Confirm the Thermal Cycler Protocol settings by comparing to Figure 2
- Save the run plate document under an appropriate file name
- A window will open asking for the "Reason for change of entry." Enter "Setup" and any other comments relevant to the run
- Open the tray
- Place the PCR plate into the frame (position A1 goes to the upper left corner), ensure that the plate fits accurately in the frame. Close the tray.
- Start the run by pressing the "Start" button

Table 7: Thermal Cycler Program (Applied Biosystems 7500 Fast Dx with SDS v1.4 or SDS v1.4.1)

Program Parameter	Denaturation		Cycling		Holding
Stage	"Stage 1"		"Stage 2"		"Stage 3"
Repetitions	1		45		1
Step	1	1	2	3	1
Target [°C]	94	62	55.5	93	40
Hold [mm:ss]	20:00	00:05	00:35	00:30	00:05
Auto Increment	0		0	0	
Ramp Rate [%]	40	80	80	40	80
Data Collection	Stage 2, Step 2 (55.5 @ 0:35)				

Figure 1: Screenshot from SDS v1.4 software after confirming settings in the 'Well Inspector' window.

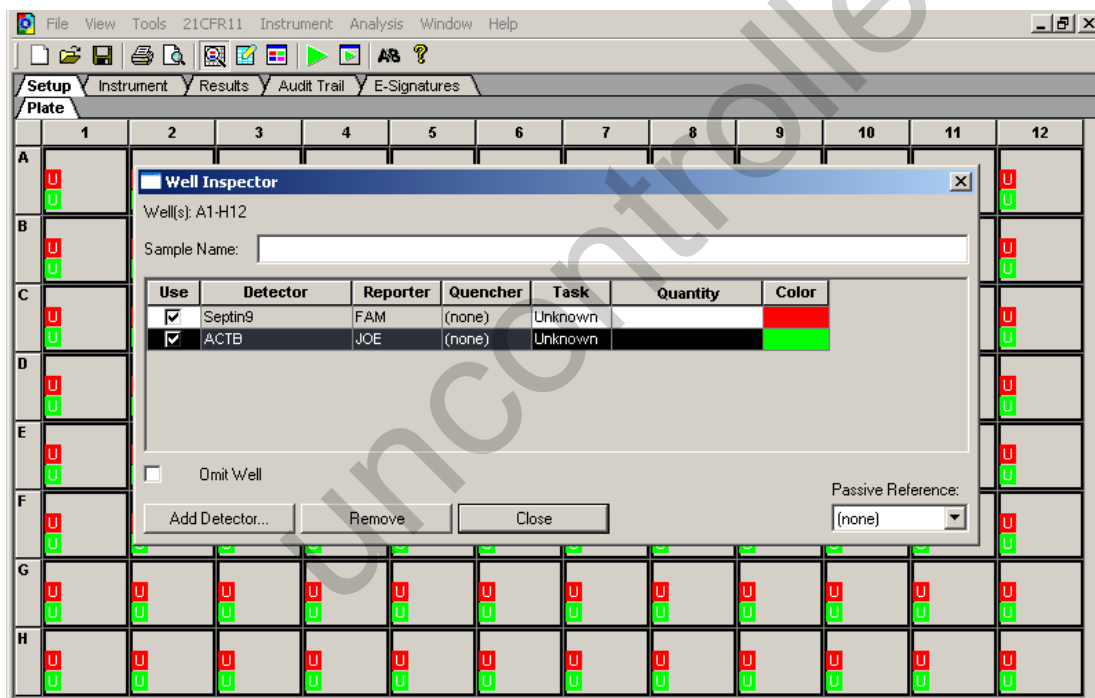
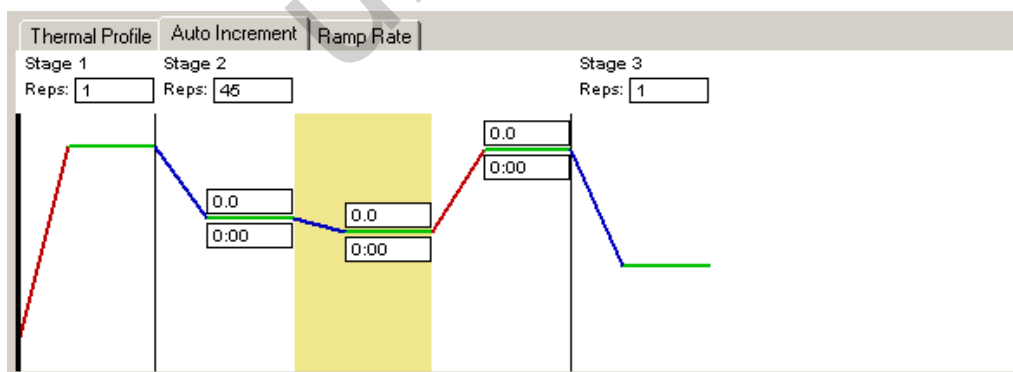
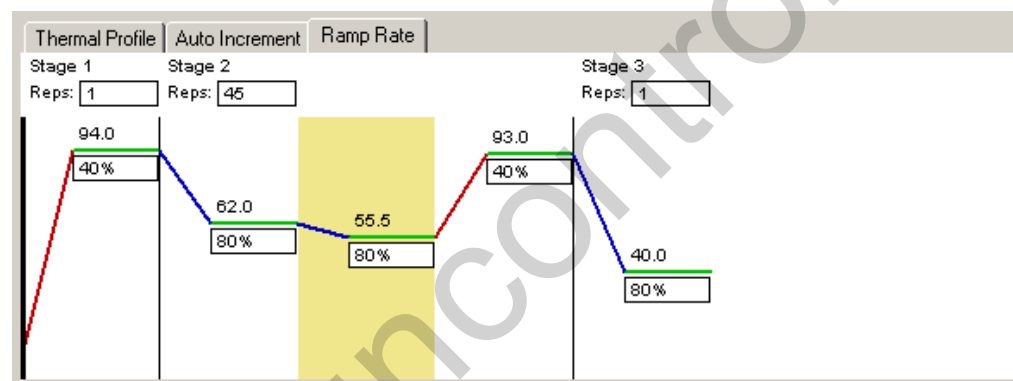
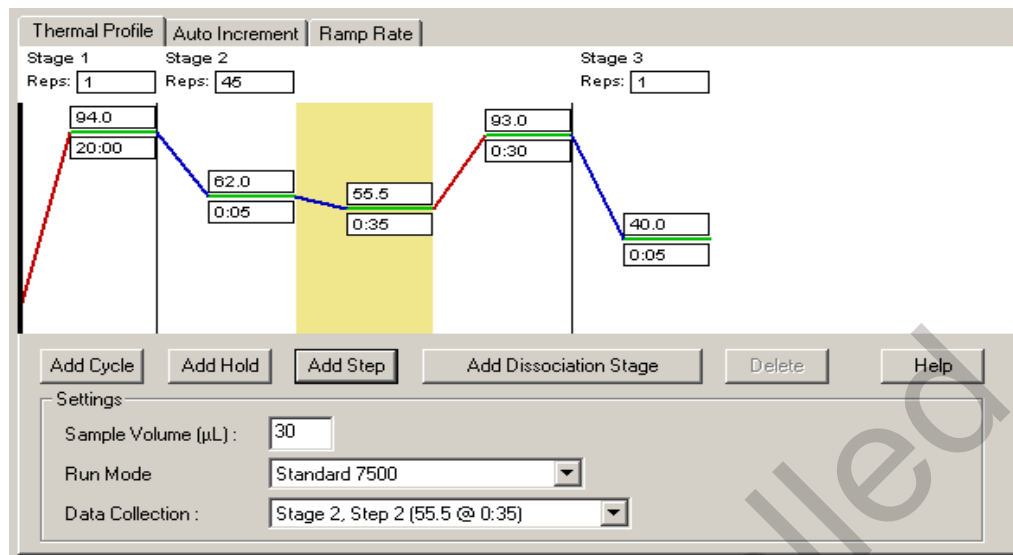



Figure 2: Screenshots from SDS v1.4 software showing correct settings for the cycling program. Temperature, time, repetitions should be displayed as shown in tab 'Thermal Profile' (upper). No changes of the default settings are made in the tab 'Auto Increment' (middle) and should be displayed as shown. Ramping rates should be displayed as shown in the tab 'Ramp rate' (lower). Sample volume, Run Mode and Data Collection are indicated below the cycling scheme in each of the tabs.



## 9.17. Results Analysis

**Note:** Analyze PCR runs with software version SDS V1.4 or version SDS V1.4.1 only. Software updates must not be initiated without written instruction from Epigenomics indicating that the Epi proColon test has been validated for use with the new software.

**Note:** Incomplete runs or runs where an error message occurs must not be analyzed. The run document must contain fluorescence data for 45 cycles.

- After completion of the PCR cycling program click “ok”
- Select the tab “Results”, then select the tab “Amplification Plot”
- Set “Analysis Setting” for Septin 9 detector to be the following:
  - Data: “Delta Rn vs Cycle”
  - Detector: “Septin9”
  - Line color: “Detector Color”
  - Manual Ct, Threshold: “50000” (appears as “5.0e+004”)
  - Manual baseline, Start (cycle): “10”
  - Manual baseline, End (cycle): “22”
- Set “Analysis Setting” for ACTB detector to be the following:
  - Data: “Delta Rn vs Cycle”
  - Detector: “ACTB”
  - Line color: “Detector Color”
  - Manual Ct, Threshold: “25000” (appears as “2.5e+004”)
  - Manual baseline, Start (cycle): “10”
  - Manual baseline, End (cycle): “22”
- Confirm the correct Analysis Settings for each detector by comparing to Figure 3
- Analyze the data by pressing the “Analyze” button  in the top menu
- Save the file by pressing Save Document in the task bar. A window will open asking for the “Reason for change of entry”. Enter “Data analysis post run” and any other comments relevant to the run.
- Septin 9 Ct values and ACTB Ct values are calculated automatically
- Ct values are displayed in the tab “Report”

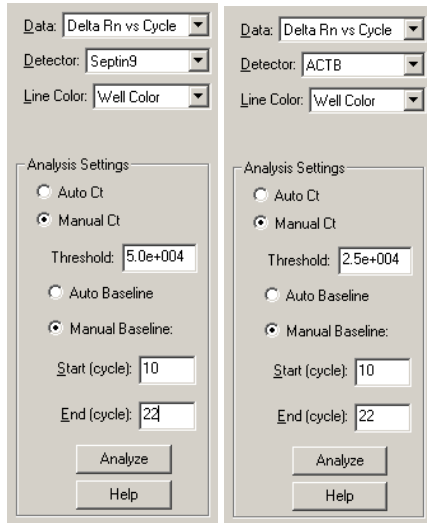


Figure 3: Screenshot from SDS v1.4 software showing correct analysis settings for the Septin 9 detector (left) and ACTB detector (right).

## 10. Interpretation of Results

### Validity Assessment of the Run by Epi proColon Controls

Any run of one or more patient sample(s) processed together with the Epi proColon Positive Control and Epi proColon Negative Control is considered VALID, **when criteria set forth in Table 8 are met for all three (3) PCR replicates per control.**

If either the Epi proColon Positive Control or Epi proColon Negative Control, or both is INVALID, the data for patient specimens processed together with the controls cannot be interpreted. Testing must be repeated for all patient specimens included in this test run.

Table 8: Validity Limits of Epi proColon Control Kit

Result of Control	Determination	Septin 9 Result	ACTB Result
Positive Control VALID	PCR1	Ct* ≤ 41.1	Ct* ≤ 29.8
	PCR2	Ct* ≤ 41.1	Ct* ≤ 29.8
	PCR3	Ct* ≤ 41.1	Ct* ≤ 29.8
Negative Control VALID	PCR1	No Ct* result ("Undetermined")	Ct* ≤ 37.2
	PCR2		Ct* ≤ 37.2
	PCR3		Ct* ≤ 37.2

\*cycle threshold

### Validity Assessment of a Single PCR of a Patient Specimen

The interpretation of a single PCR is performed according to Table 9. Provided that the result of the internal control assay ACTB indicates sufficient input of bisDNA into the single PCR (ACTB cycle threshold at most 32.1), the result of the Septin 9 PCR defines the result for this single PCR. An ACTB cycle threshold above 32.1 turns the single PCR result to "INVALID PCR".



Table 9: Interpretation of Results for Single PCR

Single PCR Result	Septin 9 Result	ACTB Result
Septin 9 Positive	Ct* < 45**	Ct* ≤ 32.1
Septin 9 Negative	No Ct* result ("Undetermined")	Ct* ≤ 32.1
INVALID	Any result	Ct* > 32.1 Or "Undetermined"

\*cycle threshold

\*\*Ct values >40 are typically observed for analyte concentrations that are below the Limit of Detection (LoD) of the assay, whereas Ct values <40 are observed for concentrations above the Limit of Detection of the assay.

### **Results Interpretation for a Patient Specimen**

The interpretation of patient test results is found on Table 10. The test result for a patient sample is "POSITIVE", if at least one PCR replicate is a Septin 9 Positive PCR. The test result for a patient specimen is "NEGATIVE", if all three PCR replicates are Septin 9 Negative PCRs. The test result is "INVALID" in all other cases.

Table 10: Interpretation of Epi proColon Test Results

Epi proColon Test Result	Positive Control Negative Control	Single PCR Results
Positive	VALID	At least one Septin 9 Positive PCR <sup>†</sup>
Negative	VALID	PCR1: Septin 9 Negative PCR PCR2: Septin 9 Negative PCR PCR3: Septin 9 Negative PCR
INVALID	VALID	All other cases <sup>‡</sup>
INVALID	INVALID	n/a

<sup>†</sup> One single PCR result is Septin 9 Positive; the two remaining single PCR results may have any result (INVALID, Septin 9 Negative, or Septin 9 Positive)

<sup>‡</sup> No single PCR result is Septin 9 Positive and at least one single PCR result is INVALID; the remaining single PCR results may be INVALID or Septin 9 Negative.

**Note:** The assessment of the validity and the interpretation of the Epi proColon test result are performed and recorded using the "Epi proColon Results Form" (IFU 0010) available at the E•Library found at [epiprocolon.com](http://epiprocolon.com).

## 11. Quality Control

Quality Control procedures are designed to monitor the integrity of reagent performance and ensure the accuracy (validity) of reported test results. As with any control product or feature, patient results should not be reported if control results fail to yield the expected results. Each laboratory should refer to the guidelines and procedures established by their laboratory, appropriate regulatory agencies, or accrediting organizations in accordance to the requirements of each laboratory's Quality Assurance program and accrediting organization.

The external Positive and Negative Controls are contained in the Epi proColon Control Kit (M5-02-003) for use with the Epi proColon Plasma Quick Kit (M5-02-001) and the Epi proColon PCR Kit (M5-02-002). The Internal Control (IC) is a part of the Epi proColon PCR Kit (M5-02-002).

### **External Controls: The Epi proColon Control Kit (M5-02-003)**

One Epi proColon Positive (PC) and one Negative (NC) Controls must be included with every run when testing patient samples using the Epi proColon test kit. These controls monitor the successful execution of the test workflow to ensure the validity of patient test results.

If the Epi proColon Positive and Negative Control test do not yield values within the required validity limits (see Table 8), see Remedial Actions, below.

### **Internal Control – Duplex $\beta$ -Actin**

For every PCR well, the duplexed detection of bisulfite-converted  $\beta$ -actin (ACTB) DNA serves as an internal control. This co-amplified sequence provides a monitor for sample quality, sample preparation and adequate DNA concentration of the specimen.

The Septin 9 PCR test result is linked to the Ct value of the ACTB PCR (see Table 9). Ct values of the ACTB PCR outside the specified range INVALIDATE the **single PCR test result**. High Ct values are associated with very low bisDNA or PCR inhibition.

If the Ct values of the ACTB reaction are outside the specified range and INVALIDATE the single PCR result, please refer to Remedial Actions, below.

### **Remedial Actions**

When External Controls (PC, NC) fail to meet the validation criteria, patient test results for the entire run should be considered INVALID and should not be reported. PC and NC and patient samples should be repeated, and if INVALID results are obtained a second time, please contact Epigenomics Customer Support or your local distributor, for assistance.

For an Internal Control that does not meet validation criteria, that single PCR result is INVALID. The patient result should be assessed based on all three PCR results according to Table 10. If the patient result is INVALID based on this assessment, the result for the patient should not be reported.

Each laboratory should perform remedial actions according to their established Quality Assurance program prior to reporting patient test results.

## 12. Limitations of the Procedure

- This product has been validated for the combination of the Epi proColon Plasma Quick Kit (M5-02-001), the Epi proColon Sensitive PCR Kit (M5-02-002), and the Epi proColon Control Kit (M5-02-003) only. These kits and components (DNA extraction, bisulfite conversion or PCR kits) are not interchangeable or replaceable with other manufacturer's products.
- The Epi proColon test has been validated for use only with plasma derived from blood collected with Vacutainer® 10 mL K2 EDTA blood collection tubes (Becton Dickinson). Do not perform this test with other clinical specimen types or with other blood collection tubes.
- The Epi proColon test has been validated for use only with the Applied Biosystems 7500 Fast Dx Real-Time PCR Instruments with Sequence Detection Software v1.4 21 CFR Part 11 Module and Windows XP or Sequence Detection Software v1.4.1 21 CFR Part 11 Module and Windows 7. Do not use with other instruments or software.
- The Limit of Detection of the assay was determined to be above the assay cutoff.

## 13. Performance Characteristics

### Clinical Sensitivity and Specificity

Three studies have been performed to demonstrate the clinical performance of the Epi proColon test. The first trial compared the performance of the Epi proColon test to colonoscopy. The second compared the performance of the Epi proColon test and a Fecal Immunochemical Test (OC-Auto) using colonoscopy as the reference method. The third (ADMIT) compared adherence to CRC screening in a randomized population using the Epi proColon blood test and a FIT test (OC-Auto).

#### **Trial One**

In a large, prospective multicenter trial (PRESEPT), 7,941 men (45%) and women (55%) ages 50 to 85, who were of average-risk for colorectal cancer were enrolled at 32 clinical sites in the US and Germany (ClinicalTrials.gov, Trial Registration ID: NCT00855348). The average-age of the screening-eligible cohort was 60 years. The study was conducted under the US Multi-Society Task Force Guideline. For this study, 1,544 plasma specimens of 6857 available from the PRESEPT study cohort were tested with Epi proColon at three independent clinical laboratories in the US.

The 1,544 samples included all CRC patients, all patients with advanced adenomas (AA), and a random subset of subjects with small polyps (SP) or no evidence of disease (NED).<sup>8</sup> Selection of SP and NED subjects was performed using a stratified random sampling approach based on the US 2010 census and the intended use population. Although not all the specimens in the PRESEPT study were tested, all relevant subpopulations were sampled and tested to derive the maximum value from the available sample pool. Clinical performance of the Epi proColon test was evaluated in terms of sensitivity for colorectal cancer and specificity in subjects negative for colorectal cancer, as determined by colonoscopy. The results for the study by overall clinical status (CRC and non-CRC) are shown in Table 11, with the sensitivity and specificity outcome in Table 12, along with positive and negative predictive values. Specificity of Epi proColon decreased with increasing age, as shown by increasing positive detection fractions within increasing age groups in Table 13.

Table 11: Result of Epi proColon Testing Sample Type

Sample Status	Negative	Positive	VALID Samples
CRC	14	30	44
Non-CRC	1182	318	1500
<b>Total</b>	<b>1196</b>	<b>348</b>	<b>1544</b>

Table 12: Clinical Performance of Epi proColon

	Point Estimate	Lower 95%	Upper 95%
<b>Sensitivity</b>	68.2 %	53.4 %	80.0 %
<b>Specificity</b>	78.8 %	76.7 %	80.8 %
<b>Specificity*</b> (weighted)	79.1 %	77.0 %	81.4 %
<b>Specificity**</b> (weighted)	80.0%	77.9 %	82.1 %
<b>Positive Predictive Value</b>	2.4%	2.0%	3.0%
<b>Negative Predictive Value</b>	99.7%	99.6%	99.8%

\* weighting according to US census population \*\* weighting according to PRESEPT patient disposition

Table 13: Results of Epi proColon Testing by Subject Age

Age	Negative	Positive	Total Samples	Positive Detection Fraction (%)	CI 95%
50 – 54	282	60	342	18	14 - 22%
55 – 59	229	40	269	15	11 - 20%
60 – 64	222	64	286	22	18 - 28%
65 – 69	200	66	266	25	20 - 30%
70 – 74	169	52	221	24	18 - 30%
75+	80	36	116	31	23 - 40%
<b>Total</b>	<b>1182</b>	<b>318</b>	<b>1500</b>	<b>21</b>	<b>19 – 23%</b>

## Trial Two

In the second clinical trial, the clinical performance of the Epi proColon test was compared to the OC-Auto test in a prospective, multi-center study.<sup>9</sup> The study was designed to collect matched blood and fecal specimens and clinical data from screening guideline-eligible subjects using colonoscopy as the reference method.

Subjects were recruited at 61 clinical sites in the US according to the following scheme:

- Subjects having CRC or a high suspicion of invasive CRC identified during screening colonoscopy were enrolled and provided blood and fecal samples at least 10 days after colonoscopy but prior to surgery or intervention
- Prospectively enrolled subjects provided blood and fecal samples prior to bowel prep for screening colonoscopy

Of 337 subjects enrolled in the study, 36 were excluded due to failure to meet inclusion/exclusion criteria. From the remaining 301 enrolled subjects, there were 101 CRC, 29 AA, 77 SP and 94 NED. Plasma samples were available from all 301 subjects. Fecal samples were not available from 11 subjects (four CRC, two AA, two SP and three NED).

Both, the Epi proColon testing and OC-Auto testing were performed at an independent US diagnostic laboratory. Test outcome was compared to results obtained from colonoscopy for both methods.

Overall sensitivity and specificity for the Epi proColon test and FIT test for all available samples and on paired samples as compared to the reference colonoscopy are calculated in Tables 14 a, b and c, with a three-way summary in Table 15.

The observed sensitivity for CRC on paired samples was 4.2% higher for the Epi proColon test (Table 14 b, c). The 95% confidence interval (-16.2%; 8.1%) was strictly below the non-inferiority margin of 10% pre-set in the protocol. The sensitivity of the Epi proColon test is statistically non-inferior to the FIT test.

For specificity, the difference between tests was 16.6% in favor of the FIT with a 95% confidence limit (10.6%; 22.9%) around the estimate (Table 14 b, c). This result does not demonstrate non-inferiority for specificity when compared to the non-inferiority margin of 20% pre-set in the protocol.

Table 14a: Epi proColon Sensitivity and Specificity, n = 301 All Plasma Samples

	Point Estimate	CI 95%
<b>Sensitivity</b>	73.3% (74/101)	63.9 – 80.9%
<b>Specificity</b>	81.5% (163/200)	75.5 – 86.3%

Table 14b: Epi proColon Sensitivity and Specificity, n = 290 Paired Samples

	Point Estimate	CI 95%
<b>Sensitivity</b>	72.2% (70/97)	62.5 – 80.1%
<b>Specificity</b>	80.8% (156/193)	74.7 – 85.8%

Table 14c: FIT Sensitivity and Specificity, n = 290 Paired Samples (equals number of available fecal samples)

	Point Estimate	CI 95%
<b>Sensitivity</b>	68.0% (66/97)	58.2 – 76.5%
<b>Specificity</b>	97.4% (188/193)	94.1 – 98.9%

Table 15: Three-Way Comparison of the Epi proColon and FIT Tests, and Colonoscopy (paired samples)

Diagnostic Accuracy Criteria: Standard Colonoscopy						
	Colorectal Cancer (CRC)			Non-Colorectal Cancer AA, SP, NED		
	Epi proColon Positive	Epi proColon Negative	Total	Epi proColon Positive	Epi proColon Negative	Total
<b>FIT Positive</b>	50	16	66	1	4	5
<b>FIT Negative</b>	20	11	31	36	152	188
<b>Total</b>	70	27	97	37	156	193

### Trial Three

In a prospective, multicenter clinical trial (ADMIT), consented subjects were randomized to the blood-based Epi proColon test or a stool-based FIT test (OC-Auto) with the primary objective of comparing adherence to CRC screening.

There were 413 eligible patients enrolled at two geographically distinct health systems. Of these, 185 of 210 subjects in the FIT arm, and 202 of 203 subjects in the Epi proColon arm were adherent to screening, Table 16. Adherence rates for Epi proColon blood test and FIT were 99.5% (CI, 97.3%-100%) and 88.1% (CI, 83.0%-91.8%), respectively. For Epi proColon, 182 of 202 blood samples obtained valid results, leaving 20 blood tests incomplete due to phlebotomy and laboratory errors. For FIT, 179 of 185 stool samples obtained valid results, leaving six samples with no result. Adherence to screening was calculated based on all samples obtained from patients for testing regardless of validity.

At both trial locations, a behavioral passive control group comprised of 213 subjects (Site 1, 88; Site 2, 125) was offered CRC screening via the institutional standard of care. Of the 88 subjects invited for screening via colonoscopy at Site 1, 11/88 (12.5%) participated. Of the 123 subjects invited for screening with FIT and two via colonoscopy at Site 2, 29 participated with FIT and one with colonoscopy for a total of 30/125 (24.0%). A total of 41/213 subjects participated in screening resulting in an overall passive control adherence rate of 19.2% (CI, 14.5%-25.1%).

Table 16: Adherence to CRC Screening with Epi proColon and FIT

	Epi proColon			FIT		
	Site 1	Site 2	Total	Site 1	Site 2	Total
<b>Adherent</b>	85	117	202	72	113	185
<b>Non-Adherent</b>	1	0	1	12	13	25
<b>Total</b>	86	117	203	84	126	210

The trial design included the secondary objectives of reporting diagnostic yield as well as compliance to colonoscopy for subjects yielding positive results from either test method. There were 182 valid Epi proColon test results, and 179 valid FIT test results. Positivity rates for the Epi proColon blood test and FIT were 16.5% (30/182) and 1.7% (3/179). Subjects with positive results were counseled to undergo colonoscopy. For subjects with a positive Epi proColon result, 17/30 (56.7%) completed colonoscopy; of these cases, 10/17 (58.8%) resulted in actionable findings (polypoid, polyps, adenomas) and 0 (0%) were diagnosed as CRC. For subjects with a positive FIT result, 1/3 (33.3%) completed colonoscopy; of these cases, one (100%) resulted in actionable findings (polyps, adenomas) and none (0%) were diagnosed with CRC.

Table 17: Adherence to Colonoscopy with Epi proColon and FIT

	Epi proColon			FIT		
	Site 1	Site 2	Overall	Site 1	Site 2	Overall
<b>Positivity Rate</b>	20.5% (14/68)	14.0% (16/114)	16.5% (30/182)	4.4% (3/68)	0% (0/111)	1.7% (3/179)
<b>Schedule Rate</b>	50.0% (7/14)	81.3% (13/16)	67.7% (20/30)	66.7% (2/3)	N/A	66.7% (2/3)
<b>Compliance Rate</b>	35.7%* (5/14)	75.0%** (12/16)	56.7% (17/30)	33.3% (1/3)	N/A	33.3% (1/3)
<b>Adenoma/Polyp Detection Rate</b>	60.0% (3/5)	58.3% (7/12)	58.8% (10/17)	100.0% (1/1)	N/A	100.0% (1/1)

\*2 colonoscopies scheduled after study; \*\* 1 colonoscopy canceled

### **Analytical Sensitivity - Limit of Detection**

The Limit of detection (LoD) of the Epi proColon test was determined at four laboratories according to CLSI EP12 and EP17 guidance documents. All sites utilized the test kit manufactured under final manufacturing conditions. Seven levels of technical samples were tested with a range of methylated DNA from 0 (blank) to 50 pg/mL. LoDs were determined using DNA spiked into plasma and into an artificial matrix of Tris buffer plus BSA. Based on the results of this study, the LoD is 4.7 pg/mL (95% CI 2.5-9.0 pg/mL).

## **Precision and Accuracy**

### *Accuracy – Internal study*

The assay Ct thresholds for the Epi proColon test were established in a study performed using 156 clinical plasma samples (reference method: colonoscopy). The instrumentation was set to 50 cycles in order to establish the Septin 9 and ACTB cycle threshold (Ct) limits on these clinical specimens. From the distributions of these data, it was evident that Ct values larger than 40 for Septin 9 PCR are rare and no Ct-values are observed above a Ct of 45. The vast majority of ACTB measurements range between 26 to 30 Ct. There was a general observation in these clinical specimens of outliers having lower Ct values. For very few specimens the ACTB value came close to Ct of 31. From these data Septin 9 and ACTB Ct limits of 45 and 32.1, respectively, were determined.

### *Accuracy – Cut-off Verification*

A second study was performed using 346 clinical plasma samples. The instrumentation was set at 50 cycles for a subset of 197 plasma samples in order to verify the Septin 9 and ACTB cycle threshold limits of 45 and 32.1, respectively, on these clinical specimens. The distributions of these data confirmed the results from the first study. Therefore, the cycle threshold limits were verified. For these 346 clinical samples, the overall agreement with clinical status was observed at 94.9% (93/98) with a 95% CI from 88.6% – 97.8% for CRC cases, and 84.3% (209/248) with a 95% CI from 79.2% – 88.3% for colonoscopy-verified controls.

### *Repeatability, Intermediate Precision and Reproducibility*

To evaluate repeatability and intermediate precision of the assay, aliquots from 14 clinical sample pools were tested at three testing sites by six operators with three reagent lots using three PCR instruments. Each plasma pool was tested 12 times. Pools 1 - 6 generated from CRC plasma were positive in all 12 tests. For the three pools representing self-declared healthy blood donors, pool 7, pools 8 and pool 9 were each negative in 9 out of 12 tests. For the pools derived by diluting a single CRC plasma aliquot in human plasma, pools 10, 13, and 14 were positive in 11 out of 12 tests, while pools 11 and 12 were positive in all 12 replicates. In total, for 129 out of 132 samples where CRC plasma was tested (pools 1 - 6, pools 10 - 14), the test result was positive leading to 98% (95% CI: 94 - 99%) positive percent agreement with clinical status. Aggregated over the three pools derived from healthy blood donors (pools 7 - 9), the test results for 27 out of 36 samples was negative leading to 75% (95% CI: 59 - 86%) negative percent agreement with clinical status. The total percent agreement estimated from these data is 156/168, i.e. 93% (95% CI: 88 - 96%). There were no differences in the positive and negative percent agreement attributable to sites, operators or kit lots.

In addition, precision and reproducibility analyses were conducted with Ct values generated on the set of 14 sample pools. For precision, the ranges of standard deviation and coefficient of variation (CV) for Septin 9 were 0.4 - 2.1 Ct and 1.1 - 5.5%, respectively. The corresponding ranges for ACTB were 0.2 - 0.4 Ct and 0.8 - 1.7%.

For reproducibility, the ranges of standard deviation and coefficient of variation for Septin 9 were 0.4 - 2.3 Ct and 1.4 - 6.0%, respectively. The corresponding ranges for ACTB were 0.2 - 0.4 Ct and 0.7 - 1.6%.

## **Cross-Reactivity**

To test for sequence cross-reactivity, BLAST alignment searches and electronic PCR analyses were performed against the human genome with the Epi proColon PCR assay (blocker, primers and probe). This analysis showed that the test is specific for amplification of the bisDNA sequence of methylated Septin 9 and therefore showed no cross-reactivity within the human genome.



Three-hundred and sixty-four samples from patients with other cancers (prostate, breast, lung) or other diseases (hypertension, hyperlipidemia, diverticulitis, chronic gastritis, or cardiovascular) with no evidence of CRC by colonoscopy, were evaluated to determine cross-reactivity. The Epi proColon test was positive in 72 of 173 patients (42%) with other cancers and positive in 33 of 191 patients (17%) with other diseases. The methylation status of the Septin 9 region was determined for 7 positive patients (3 patients with other cancers, 4 patients with other diseases) by bisulfite sequencing of the PCR product. For all test positives, sequencing confirmed methylation of the Septin 9 PCR target area. This study demonstrates that the Epi proColon test detects the true biological status for these other conditions rather than reporting cross-reactivity.

### **Interfering Substances**

A study was conducted to verify that the presence of interfering substances potentially found in plasma samples have no effect on the test results. The ten (10) most common substances present in human plasma were selected and tested at the highest concentration that would occur in a clinical setting. Albumin (40 mg/mL), Bilirubin (0.2 mg/mL), Cholesterol (5 mg/mL), D-(+) Glucose (10 mg/mL), Hemoglobin (10 mg/mL), K<sub>2</sub>EDTA (20 mg/mL), Red Blood Cells (0.4 % v/v), Triglycerides (12 mg/mL), human genomic DNA (100 ng/mL), and Uric Acid (0.235 mg/mL) were tested in 6 plasma specimens each (3 analyte negative, 3 analyte positive). None of the substances interfere with the test when added to the specimen at the listed concentration level.

uncontrolled

## 14. Meaning of Symbols



Consult Instructions for Use



Order Number



*In Vitro* Diagnostic Medical Device



Lot Number



Use By Date



Manufacturer



Temperature Limits for Storage



Contains sufficient materials for <n> tests



Do not reuse



Negative Control



Positive Control



CE mark (made in compliance with 98/79/EC Directive on IVDs)

---

R x O n l y

Caution: Federal Law restricts this device to sale by or on the order of a licensed practitioner.



Datamatrix Barcode, Unique Device Identifier

---

## 15. References

- 1 deVos, T et al. (2009) Circulating methylated *SEPT9* DNA in plasma is a biomarker for colorectal cancer. *Clin Chem*, 2009, 55(7): 1337-46.
- 2 Lofton-Day C. et al. DNA methylation biomarkers for blood-based colorectal cancer screening. *Clin Chem*, 2008, 54(2):414-423.
- 3 Gruetzmann R. et al. Sensitive Detection of Colorectal Cancer in Peripheral Blood by Septin9 DNA Methylation Assay. *PLOS ONE*. 2008, 3(11): e3759.
- 4 Model, F. et al. Identification and Validation of colorectal neoplasia-specific methylation markers for accurate classification of disease. *Mol Cancer Res*. 2007, 5:153-163.
- 5 Eads C et al. MethylLight: a high-throughput assay to measure DNA methylation. *Nucleic Acids Res*. 2000, 28(8):e32.
- 6 Warren D et al. Septin9 methylated DNA is a sensitive and specific blood test for colorectal cancer. *BMC Med*. 2011,9:133.
- 7 Epigenomics data on file.
- 8 Potter N et al. Validation of a real-time PCR-based qualitative assay for the detection of methylated *SEPT9* DNA in human plasma. *Clin Chem*. 2014, 60(9):1183-1191.
- 9 Johnson D et al. Plasma Septin9 versus fecal immunochemical testing for colorectal cancer screening: a prospective multicentre study. *PLOS ONE*. 2014, 9(6):e98238.

## 16. Contact Information

For questions, information or Customer Support, please contact Epigenomics, Inc. in one of the following ways:

Email	Support.US@epigenomics.com
On-Line	EpiproColon.com
Toll-free	844 537 4669 (844-5-EPI NOW)
Corporate Phone	240 747 7002 Fax: 240 747 7052

### Distributor information

Company name	Polymedco Cancer Diagnostic Products, LLC
Address:	510 Furnace Dock Road Cortlandt Manor, NY 10567
Email:	Info@Polymedco.com
Toll Free:	800 431 2123
Corporate Phone:	914 739 5400 Fax: 914 739 5890

### **Notice to Purchaser**

Epi proColon is a registered trademark of Epigenomics AG, in the US, Europe, and other selected countries. All other trademarks, brands, and names contained herein are the property of their respective owners. The Applied Biosystems<sup>®</sup>, MicroAmp<sup>®</sup> are registered trademarks of Life Technologies Corporation; DynaMag<sup>™</sup> is a trademark of Life Technologies Corporation; FAM<sup>™</sup>, JOE<sup>™</sup> and TAMRA<sup>™</sup> are trademarks of Applied Biosystems Corporation; BD Vacutainer<sup>®</sup> is a registered trademark of Becton Dickinson Inc. Corporation; Thermomixer<sup>®</sup>, Research<sup>®</sup>, Multipette<sup>®</sup>, ep Dualfilter T.I.P.S.<sup>®</sup>, Combitips Advanced<sup>®</sup>, Repeater<sup>®</sup> Plus, Research<sup>®</sup> Plus are registered trademarks of Eppendorf AG; HandyStep<sup>®</sup> is a registered trademark of Brand GmbH + Co KG; BrandTech<sup>®</sup> is a registered trademark of BrandTech Scientific, Inc.; OC-AUTO<sup>®</sup> is a registered trademark of Polymedco Cancer Diagnostics Products, LLC, VWR<sup>®</sup> PCR Sealing Film is a registered trademark of VWR International; Samco<sup>™</sup> is a trademark of Samco Scientific Corporation.

The purchase of this product grants the purchaser rights under certain Roche patents to use it solely for providing human *in vitro* diagnostic services. No general patent or other license of any kind other than this specific right of use from purchase is granted hereby.